

MAKERS

architecture • planning • urban design



CAPABILITIES STATEMENT

Seattle
500 Union St, Suite 700
Seattle, WA 98101

San Diego
101 West Broadway, Suite 540
San Diego, CA 92101

www.makersarch.com

GENERAL INFORMATION

MAKERS architecture and urban design, LLP

Year Founded: 1972

Federal Planning Experience: 45 years

Federal Planning Team: 19 personnel

Cage Number: 7V878

UEI: G2NSCWQW7727

NAICS CODES

Small business qualification under:

541310 Architectural Services

541320 Landscape Architectural Services

541330 Engineering Services

CERTIFICATIONS

WOSB Federal Women-Owned Small Business

PRIME CONTRACTS

NAVFAC SW IDIQ for Facility Planning
N62473-22-D-1202

NAVFAC NW IDIQ for Planning and Engineering
N44255-23-D-2000

SERVICES

Installation
Development Plans

Area Development
Plans

New Platform
Requirements

Climate Resiliency
Plans

Capital Investment
Plans

Basing and
Homeporting Studies

Site Planning

Conceptual Design

Planning and Design
Charrettes

iNFADS, PAX, and
INSIPP Editing

DD 1391s

Asset Evaluations

Basic Facility
Requirements

Cost Estimates

Economic Analyses

Business Case
Analyses

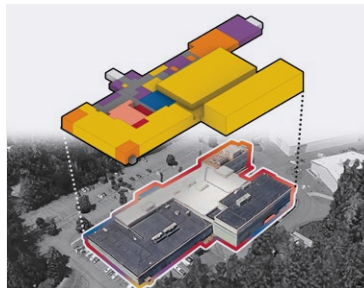
Geographic
Information System

Who We Are

MAKERS architecture and urban design is a customer-focused, woman-owned small business with over 45 years of federal facility planning experience, including the execution of 400+ task orders as prime contractor or a contributing team member.

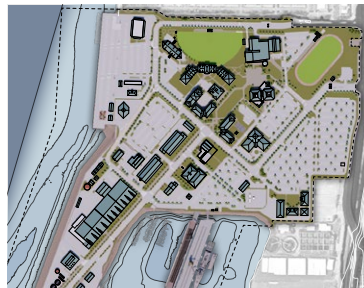
Our team of planners, architects, landscape architects, designers, and GIS professionals has a reputation for enhancing operational readiness with facility plans driven by requirements and mission need.

Focus Areas



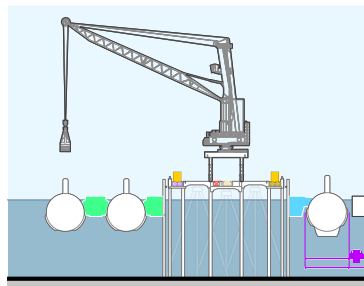
Asset Management

BFRs, AEs, and other asset management products are the building blocks of every plan and provide foundational data that informs decision making.



Master Planning

IDPs, ADPs, and GSIPs respond to unique conditions and needs at each installation with plans that establish a vision and transform the built environment.



Requirements and DD 1391s

Planning studies and DD 1391s define project scopes and provide thoughtful solutions in response to new platforms, mission growth, or other specific facility shortfalls.



Charrettes

Collaborative design charrettes that define operational requirements, craft minimally viable project scopes, evaluate alternative construction methods, and result in solutions that allow for swift implementation.

Successful projects start with a great plan.

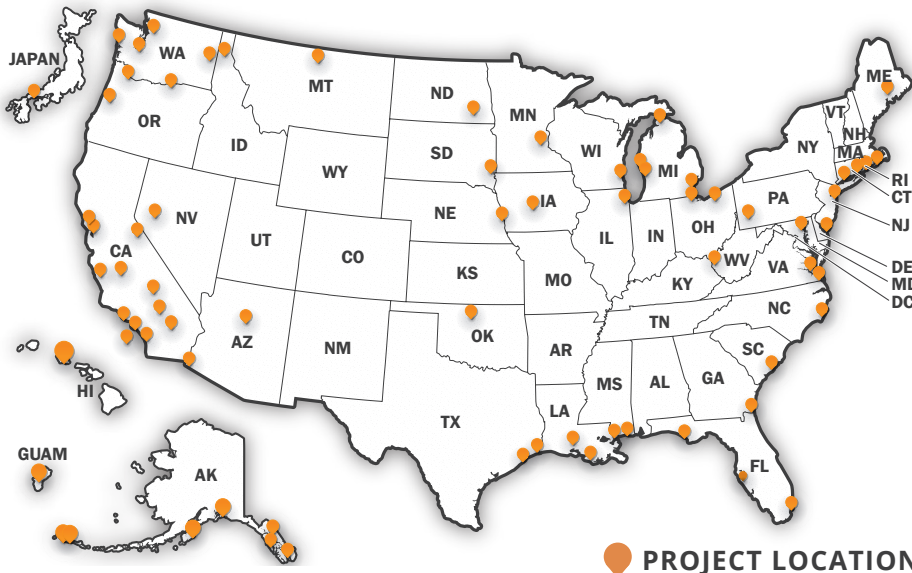
MAKERS

architecture • planning • urban design

www.makersarch.com

Recent Past Performance

Functional Analysis Concept Design Buildings 56 and 74 Legal Service Office, <i>Navy Region Southwest Judge Advocate General (JAG) Corps, Naval Base San Diego</i>	●		●	●
Vance Air Force Base Industrial District, Community District, and Training District Plans, <i>Vance Air Force Base</i>		●		●
Naval Base Coronado Installation Climate Resiliency Plan, <i>Naval Base Coronado</i>		●		●
Naval Undersea Warfare Division Keyport Modernization Plan, <i>Naval Base Kitsap Keyport</i>	●	●	●	●
Naval Special Warfare Group 8 Global Shore Infrastructure Plan, <i>Guam, Pearl City, HI, Naval Air Station North Island, CA, and Joint Expeditionary Base Little Creek, VA</i>	●	●	●	●
Trident Training Facility Analysis of Alternatives, <i>Naval Base Kitsap Bangor</i>			●	●
Marine Corps Asset Evaluations, <i>MCAS Iwakuni, Japan, MCAS Miramar, MCRD San Diego, MCAGCC Twentynine Palms</i>	●			
Naval Air Weapons Station China Lake Installation Development Plan and Area Development Plans, <i>NAWS China Lake</i>		●		●
Naval Special Warfare Kodiak Area Development Plan, <i>Naval Base Kitsap Kodiak</i>		●	●	●
Naval Air Warfare Center Weapons Division Optimization Plan, <i>Point Mugu, Naval Base Ventura County</i>	●	●	●	●
Command Submarine Development Squadron Five Area Development Plan, <i>Naval Base Kitsap Bangor</i>	●	●	●	●
Naval Station Everett Installation Development Plan and Area Development Plans, <i>Naval Station Everett</i>		●		●
Naval Base Kitsap Bangor Waterfront Area Development Plan and Tribal Interest Strategy, <i>Naval Base Kitsap Bangor</i>		●		●
F-35C Concept Loading Study, <i>Naval Air Station Lemoore</i>	●	●	●	●
Naval Base Point Loma/Naval Weapons Station Seal Beach Magazine Study for SSNs, <i>Naval Base Point Loma, Naval Weapons Station Seal Beach, & Naval Weapons Station Seal Beach Det Fallbrook</i>	●		●	●
Unmanned Surface Vessel Squadron Three Shore Infrastructure Plan, <i>Navy Region Southwest AOR</i>	●	●	●	●



ASSET
MANAGEMENT

MASTER
PLANNING

REQUIREMENTS
AND DD1391S

CHARRETTES

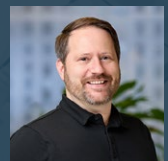
FEDERAL PROGRAMS LEADERSHIP



Stefani Wildhaber RA
stefaniw@makersarch.com
Office 206-602-6244 Mobile 425-922-2599



Brent Huizingh AICP
brenth@makersarch.com
Office 206-602-6139 Mobile 206-925-9255



Andy Fenstermacher AICP, LEED AP, PMP
andyf@makersarch.com
Office 206-602-6132 Mobile 206-708-0576

Successful projects start with a great plan.